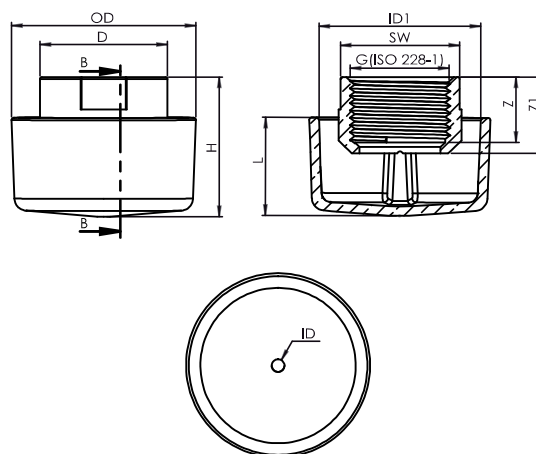


Art. 4.G166



Beschrieb: Überlaufkopf
Material: Rotguss
Gewindeart: ISO 228-1

Description: chantepleure
Matériel: bronze
Filetage: ISO 228-1

4.G166	100	125	150	200	250	300
G	1"	1 1/4"	1 1/2"	2"	2 1/2"	3"
OD	58	69	81	99	125	148
ID	4	5	5	6	7	8
ID1	52	63	76	93	118	139
D	40	50	56	69	85	97
L	31	35	40	50	60	69
SW	37	47	53	64	80	94
Z	20	22	22	28	30	33
Z1	25	27	27	32	35	39
H	44	50	55	65	77	91
Verpackung / Emballage						
Polybag	1	1	1	1	1	1