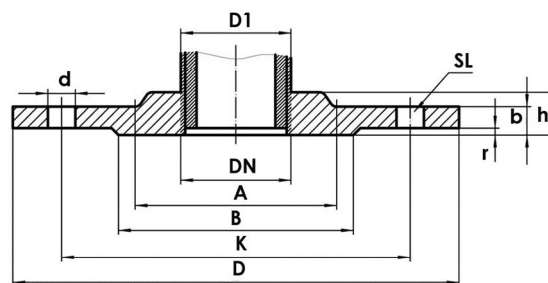


Art. 8.0629



Beschrieb: Gewindeflansch, DIN 2566
Material: Edelstahl AISI 316
Betriebsdruck: PN 16
Gewindeart: IG-Rp / ISO 7-1

Description: bride filetée, DIN 2566
Matériel: inox AISI 316
Pression de service: PN 16
Filetage: f-Rp / ISO 7-1



8.0629.	050	075	100	125	150	200	250	300	400
Rp	1/2"	3/4"	1"	1 1/4"	1 1/2"	2"	2 1/2"	3"	4"
DN	15	20	25	32	40	50	65	80	100
A	35	45	52	60	70	85	105	118	140
B	45	58	68	78	88	102	122	138	158
D	95	105	115	140	150	165	185	200	220
b	14	16	16	16	16	18	18	20	20
K	65	75	85	100	110	125	145	160	180
d	14	14	14	18	18	18	18	18	18
h	20	24	24	26	26	28	32	34	38
r	2	2	2	2	3	3	3	3	3
SL	4	4	4	4	4	4	4	8	8
Verpackung / Emballage									
Polybag	1	1	1	1	1	1	1	1	1